

RECESSED BELZONA SELF LEVELLING LINE MARKING

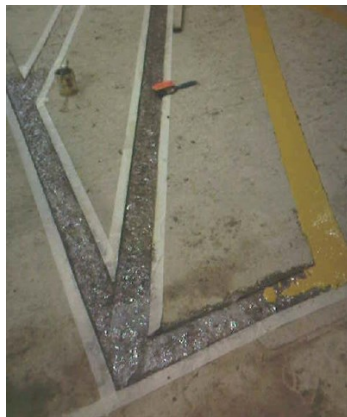
ID: 6098

Industry: General Industry
Application: FPA-Floor Problem Areas
Substrate: Concrete
Products: * Belzona 5231 (SG Laminate) ,
* Belzona 9221 (Surefoot Aggregate White) ,

Customer Location: Waste Recycling Plant, UK
Application Date: 2012

Problem

Line markings in the facilities of this leading waste handling company typically only lasted days before being destroyed by the heavy plant shovels. A previous Belzona trial had proved very successful and so was again chosen as the solution for this site entrance.



Photograph Descriptions

- * Entrance with lines recessed 5mm ,
- * Channels conditioned with Belzona 4911 ,
- * Line marking with Belzona 5231 ,

Application Situation

Line Marking in Heavy Plant Areas

Application Method

Application was carried out in accordance with Belzona Know-How System Leaflet FPA-4. A channel was cut into the floor about 160mm wide and 5mm deep. A self-levelling screed was mixed using 3:1 Belzona 5231 and Belzona 9221, before being poured into the channel.

For more examples of Belzona Know - How In Action, please visit <https://khia.belzona.com>

ISO 9001:2015
FS 695214
ISO 14001:2015
EMS 695213

Belzona products are
manufactured under an ISO
9000 Registered Quality
Management System.

www.belzona.com

**BELZONA**
Repair • Protect • Improve

Belzona Facts

This self-levelling mix of Belzona 5231 offered a cost effective and solvent free application that would not shrink. The recessed application has survived constant heavy traffic with shovels scraping over it as the waste is moved into the facility.

For more examples of Belzona Know - How In Action, please visit <https://khia.belzona.com>

ISO 9001:2015
FS 695214
ISO 14001:2015
EMS 695213

Belzona products are
manufactured under an ISO
9000 Registered Quality
Management System.

www.belzona.com

