

TEMPERATURE REDUCED ON METAL ROOF WITH BELZONA

ID: 6114

Industry: Buildings & Structures

Application: RPA-Roof Problem Areas

Substrate: Sectional steel roofing.

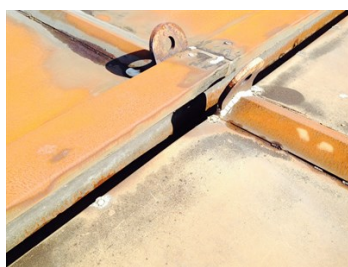
Products: * Belzona 3111 (Flexible Membrane) ,

Customer Location: Hospital, Teesside, UK

Application Date: 2014

Problem

Leaks were evident from the jointing trims on the roof and the very narrow gutters. An additional problem during the summer months was the high internal temperatures of the rooms beneath and air-conditioning units would struggle to keep the areas cool enough for the staff and supplies. In fact, the building was known locally to staff as the "biscuit tin", as you would bake inside it.



Photograph Descriptions

- * Corroded sectional metal roof ,
- * Gutter detail close up ,
- * Gutter detail coated with Belzona 3111 ,
- * Completed application ,

Application Situation

Steel roof over Medical equipment store.

Application Method

The application was carried out in accordance with Belzona Know-How System Leaflets RPA-1, RPA-6 and RPA-8.

Belzona Facts

The Belzona 3111 water based membrane was able to seal the most complex of geometries with a simple brush application. Despite the gutters being only 70mm wide and having restricted access, they were all successfully sealed. The whole roof was protected with Belzona 3111 in a light grey colour to help with solar reflection in the summer, and so help reduce the temperatures inside.

For more examples of Belzona Know - How In Action, please visit <https://khia.belzona.com>

ISO 9001:2015

FS 695214

ISO 14001:2015

EMS 695213

Belzona products are
manufactured under an ISO
9000 Registered Quality
Management System.

www.belzona.com


BELZONA[®]
Repair • Protect • Improve

For more examples of Belzona Know - How In Action, please visit <https://khia.belzona.com>

ISO 9001:2015
FS 695214
ISO 14001:2015
EMS 695213

Belzona products are
manufactured under an ISO
9000 Registered Quality
Management System.

www.belzona.com

Copyright © Belzona International Limited 2025

