

BELZONA REPAIRS AND COATS END SUCTION PUMP CASING

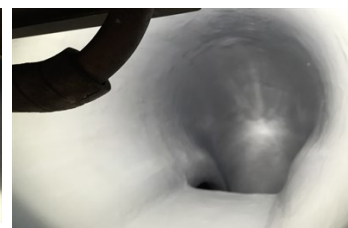
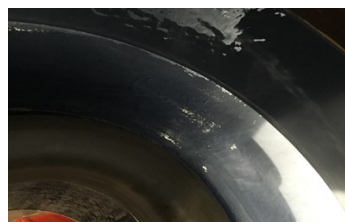
ID: 6344

Industry: *Pulp & Paper*
Application: *CEP-Centrifugal Pumps*
Substrate: *Carbon Steel*
Products: ** Belzona 1121 (Super XL-Metal) ,*
** Belzona 5821 ,*

Customer Location: *Campti, Louisiana*
Application Date: *June 2016*

Problem

The casing was badly damaged and cracked



Photograph Descriptions

* 1. Installing Belzona 1121 to fill pits and form smooth uniform surface 2. First coat of Belzona 5821 applied at 10 mils 3. Second coat of Belzona 5821 being applied at 10 mils 4. Two coats of Belzona 5821, total DFT of 20 mils ,

Application Situation

Centrifugal Pump at a papermill.

Application Method

Surface was abrasive blast to a cleanliness standard of SSPC-SP10 and a minimum of a 3 mil angular profile on internal wet area. Internal pitting and repair damage was filled with Belzona 1121. Two (2) coats of Belzona 5821 was applied at a minimum of 10 mils per coat on internal surfaces. Coated components were inspected and any holidays or imperfection was corrected. Application carried in accordance to system leaflets CEP-3 and CEP-5.

Belzona Facts

The customer saved \$15,000 and the application took 3 days to complete. The customer wanted to try Belzona on this casing since previously they were only getting 3 months of service out of the casing. This pump was coated a year prior with Belzona. When they opened in January 6 months later it still looked just like the day it was coated. That's when they decided to coat all their pumps with Belzona.

For more examples of Belzona Know - How In Action, please visit <https://khia.belzona.com>

ISO 9001:2015
FS 695214
ISO 14001:2015
EMS 695213

Belzona products are
manufactured under an ISO
9000 Registered Quality
Management System.

www.belzona.com

**BELZONA**
Repair • Protect • Improve