

# BELZONA SEALS EXPOSED PARKING DECK SEAMS

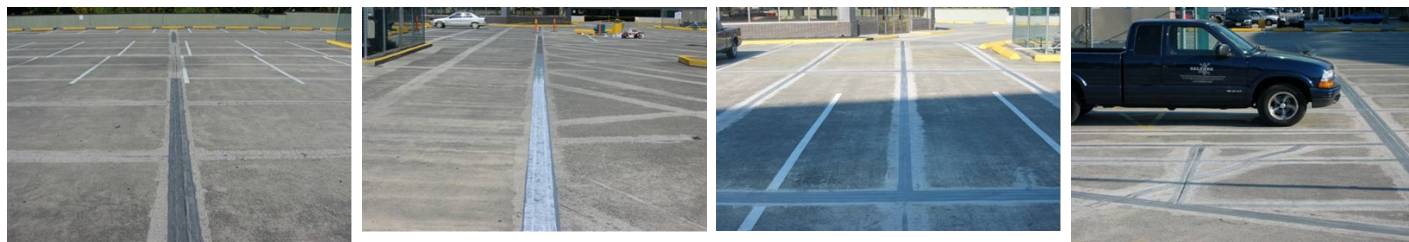
ID: 687

Industry: General Industry  
Application: RPA-Roof Problem Areas  
Substrate: Concrete  
Products: \* Belzona® 3121 (MR7 Membrane),

Customer Location: Surrey, BC, Canada  
Application Date: Ongoing since 2000

## Problem

Customer was looking for a long lasting solution for sealing seams on an exposed concrete parking deck.



## Photograph Descriptions

- \* Initial test area after more than 2 years service ,
- \* Application in progress - 1st coat with Reinforcement Sheet in place ,
- \* Application of 2nd coat in progress ,
- \* Completed section of deck ,

## Application Situation

Over 15000 linear feet of expansion joint seams needed to be sealed

## Application Method

Application was carried out in accordance with a modified version of Belzona Know-How System Leaflet RPA-1.

## Belzona Facts

Test strips were installed at the site in 2000. Both 3111 and 3121 were submitted. Both products performed well showing no deterioration after 2 years. Belzona 3121 was chosen for its relative ease of application. Application has been spread over 3 years with a total of about 15,000 linear feet of seams completed

For more examples of Belzona Know - How In Action, please visit <https://khia.belzona.com>

ISO 9001:2015  
FS 695214  
ISO 14001:2015  
EMS 695213

Belzona products are  
manufactured under an ISO  
9000 Registered Quality  
Management System.

[www.belzona.com](http://www.belzona.com)

  
**BELZONA®**  
Repair • Protect • Improve