

BELZONA UPGRADES WEAR PLATES ON PELTON TURBINE

ID: 714

Industry: Power

Application: SHM-Solids Handling Machinery

Customer Location: Hydroelectric Power Plant, France

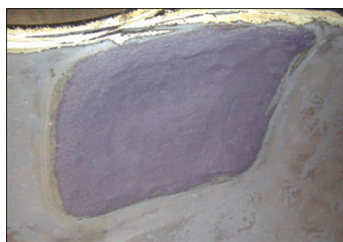
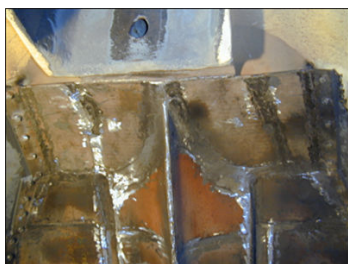
Application Date: May 2001

Substrate: Steel

Products: Belzona® 1311 (Ceramic R-Metal) <div>Belzona® 5811 (Immersion Grade) </div><div>Belzona® 1812 (Ceramic Carbide FP)</div>

Problem

Vibration had lead to weld failure on the splash plates and the anti-wear plates needed replacing



Photograph Descriptions

* Application Situation , * Weld Failure , * Belzona® 1812 in Situation ,

Application Situation

Pelton Turbine

Application Method

The application was carried out in accordance with modified Belzona Know-How System Leaflets SHM-11 & GSS-9.

Belzona® 1311 used to seal around wear plates and Belzona® 5811 was injected into the cavity behind the wear plates. Belzona® 1812 then applied over the top as a sacrificial coating.

Belzona Facts

The Belzona® 1812 was reapplied every year and 5 years after the initial application the anti-wear plates were still in place.

For more examples of Belzona Know - How In Action, please visit <https://khia.belzona.com>

ISO 9001:2015

FS 695214

ISO 14001:2015

EMS 695213

Belzona products are
manufactured under an ISO
9000 Registered Quality
Management System.

www.belzona.com


BELZONA®
Repair • Protect • Improve