

Wear Plates in Rolling Mill Secured with Belzona

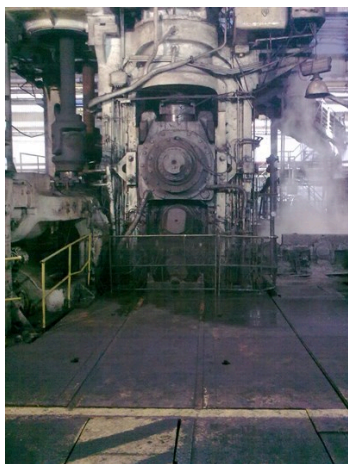
ID: 7620

Industry: *Steel & Metal Processing*
Application: *GSS-Gaskets, Seals and Shims*
Substrate: *Steel and hardox*
Products: ** Belzona 1321 (Ceramic S Metal) ,*

Customer Location: *Steel plant, Slovakia*
Application Date: *2015*

Problem

An irregular shim is required to secure the wear plates once levelled and bolted in place.



Photograph Descriptions

* 1. The Rolling Mill 2. Testing of the Belzona 1321 injection 3. Wear plate 4. Belzona 1321 injection in action ,

Application Situation

Customer needed to change wear plates on steel rolling mill.

Application Method

Application was carried out in accordance with Belzona System Leaflet GSS-9.

Belzona Facts

Wear plates have to be adjusted, tightened and then Belzona 1321 injected to create irregular shim between plate and mill frame. This is a routine application for Belzona 1321 which demonstrates excellent compressive strength required for this application.

For more examples of Belzona Know - How In Action, please visit <https://khia.belzona.com>

ISO 9001:2015
FS 695214
ISO 14001:2015
EMS 695213

Belzona products are
manufactured under an ISO
9000 Registered Quality
Management System.

www.belzona.com


BELZONA
Repair • Protect • Improve