

# Machine for cellulose production levelling

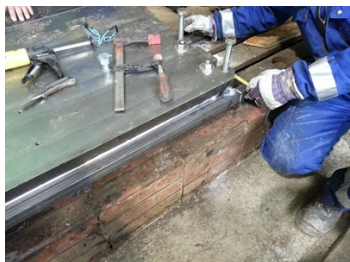
ID: 7621

Industry: *Pulp & Paper*  
Application: *GSS-Gaskets, Seals and Shims*  
Substrate: *Concrete*  
Products: *Belzona 5811 (Immersion Grade)*

Customer Location: *Cellulose production plant, Slovakia*  
Application Date: *July 2016*

## Problem

*Machine anchor and balance*



Bases of the machines have to be seated on the correct place



Every possible leakage had to be close



Injection



Ready to work

## Application Situation

Customer wanted to anchor a new machine for cellulose production. New machine has to be balanced.

## Application Method

Application was carried out in accordance with Belzona 5811 Instruction for use.

## Belzona Facts

Bases of the machines have to be seated on the correct place, then Belzona 5811 was injected to fix the bases.

For more examples of Belzona Know - How In Action, please visit <https://khia.belzona.com>

ISO 9001:2015  
FS 695214  
ISO 14001:2015  
EMS 695213

Belzona products are  
manufactured under an ISO  
9000 Registered Quality  
Management System.

[www.belzona.com](http://www.belzona.com)

Copyright © Belzona International Limited 2025

  
**BELZONA®**  
Repair • Protect • Improve