

ELEVATOR PIT LEAK SEALED WITH BELZONA

ID: 7639

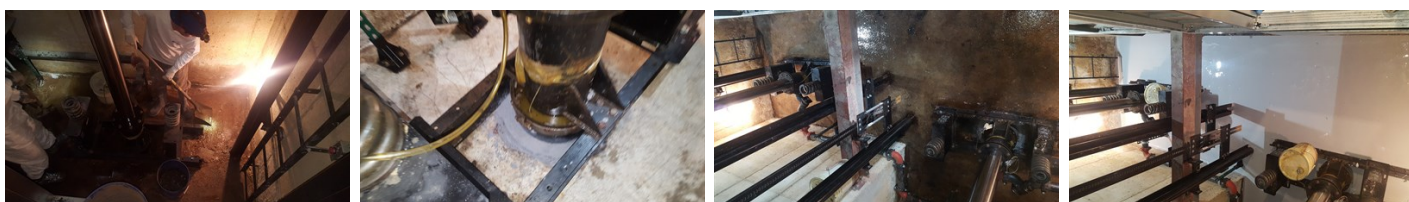
Industry: Buildings & Structures
Application: FPA-Floor Problem Areas
Substrate: Concrete

Customer Location: Missouri, USA
Application Date: December 2017

Products: * Belzona 4131 (Magma Screed) ,
* Belzona 4151 (Magma-Quartz Resin) ,
* Belzona 5231 (SG Laminate) ,

Problem

The concrete pit of an elevator shaft had begun to deteriorate and allow water to enter the pit, damage the substrate and corrode the supporting steel structures.



Photograph Descriptions

- * 1. Original condition of the elevator shaft. Full of muck, mud, oil, and standing water. ,
- * 2. Belzona 4131 used to create a permanent seal around the elevator drive shaft. ,
- * 3. Belzona 4151 applied as a basecoat. ,
- * 4. Belzona 5231 used as a topcoat. ,

Application Situation

After meeting with a property management company to discuss leak sealing their cooling tower, they expressed interest in our ability to leak seal concrete containment pits and wanted to explore the possibility of Belzona sealing up their leaking elevator shaft.

Application Method

All surface contaminants were removed and the substrate was power washed and dried. Once dried, the surface was prepared to application requirements and Belzona 4131 was used to rebuild any failures and create a permanent seal around the elevator drive shaft hole. Then a base coat of Belzona 4151 was used to cover the entire floor, sump, and 2" up the walls. A topcoat of Belzona 5231 was then applied within the overcoat parameters of Belzona 4151 and left to cure overnight.

Belzona Facts

This application was completed after hours and within one shift (approx. 10 hours) and saved the Customer from any shutdown time and expensive concrete replacement.

For more examples of Belzona Know - How In Action, please visit <https://khia.belzona.com>

ISO 9001:2015
FS 695214
ISO 14001:2015
EMS 695213

Belzona products are
manufactured under an ISO
9000 Registered Quality
Management System.

www.belzona.com


BELZONA[®]
Repair • Protect • Improve