

# LIFT STATION RESTORATION WITH BELZONA 1321

ID: 7659

## Industry:

Application: CEP-Centrifugal Pumps

Substrate: Cast Iron

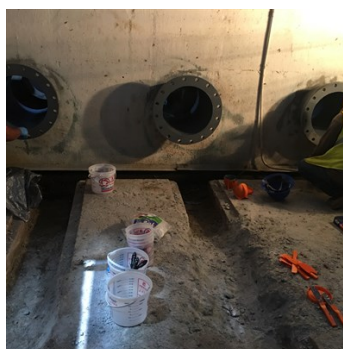
Products: \* Belzona 1111 (Super Metal) ,  
\* Belzona 1321 (Ceramic S-Metal) ,

Customer Location: Florida, USA

Application Date: July 2016

## Problem

Four pieces of pipe were permanently embedded in the brick and concrete walls of the lift station. Not wanting to damage the building, they specified Belzona for restoration of the four segments of pipe.



## Photograph Descriptions

- \* After grit blasting, the cast iron pipes were very rough. ,
- \* The GC crew learned how to mix and apply Belzona products. ,
- \* Three pipes in the back wall, one in the side wall. ,
- \* One pipe finished. ,

## Application Situation

One of the city's main lift stations. The city wanted to replace all the corroded cast iron pipe.

## Application Method

The application was carried out in accordance with CEP-3. First, the pipes were grit blasted with Black Beauty. Belzona 1111 was applied to smooth out the rough cast iron and Belzona 1321 was applied in two coats. The Manufacturer's Instructions for Use were strictly followed.

## Belzona Facts

Refurbishing the existing pipes could save the integrity of the existing building which would have saved the Customer replacement costs.

For more examples of Belzona Know - How In Action, please visit <https://khia.belzona.com>

ISO 9001:2015

FS 695214

ISO 14001:2015

EMS 695213

Belzona products are  
manufactured under an ISO  
9000 Registered Quality  
Management System.

[www.belzona.com](http://www.belzona.com)

  
**BELZONA**  
Repair • Protect • Improve