

# Dewatering Centrifuge Scroll Rebuilding and Protection with Belzona

ID: 7872

Industry: Water / Wastewater

Customer Location: Wastewater Treatment Plant, Riyadh,  
Saudi Arabia

Application: CEP-Centrifugal Pumps

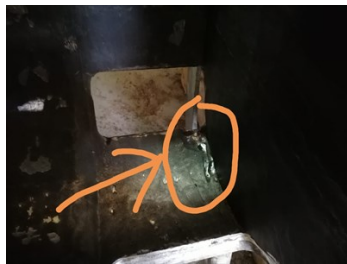
Application Date: 2018

Substrate:

Products: \* Belzona 1311 (Ceramic R-Metal) ,  
\* Belzona 1812 (Ceramic Carbide) ,

## Problem

The Dewatering Centrifuge Scroll was damaged and metal chunks were broken due to aggressive wear and abrasion of waste material. All this lead to the client taking it out of service



## Photograph Descriptions

- \* 1. The Dewatering Centrifuge Scroll ,
- \* 2. A close up of the damage ,
- \* 3. Rebuilt with Belzona 1311 ,

## Application Situation

A Dewatering Centrifuge Scroll

## Application Method

In accordance with CEP-1, firstly, the surface was prepared using A3 Grit to get a surface profile of minimum 75 microns. Then, solvent cleaning using MEK. After that, the damaged/abraded surface was filled with Belzona 1311 (Ceramic R-Metal) to level. Finally, Belzona 1812 (Ceramic Carbide) was applied as an abrasion resistant lining to a thickness of 3mm.

## Belzona Facts

For more examples of Belzona Know - How In Action, please visit <https://khia.belzona.com>

ISO 9001:2015

Belzona products are

FS 695214

manufactured under an ISO

ISO 14001:2015

9000 Registered Quality

EMS 695213

Management System.

[www.belzona.com](http://www.belzona.com)



A Belzona solution was necessary as the plant had no other alternatives other than replacing the scroll which was the more expensive option. The Belzona application was completed in only 3 hours.

---

For more examples of Belzona Know - How In Action, please visit <https://khia.belzona.com>

ISO 9001:2015  
FS 695214  
ISO 14001:2015  
EMS 695213

Belzona products are  
manufactured under an ISO  
9000 Registered Quality  
Management System.

[www.belzona.com](http://www.belzona.com)

