

Belzona restores a pump from a nuclear power plant

ID: 7902

Industry: Power

Application: CEP-Centrifugal Pumps

Substrate: Carbon steel

Products: * Belzona 1311 (Ceramic R-Metal) ,

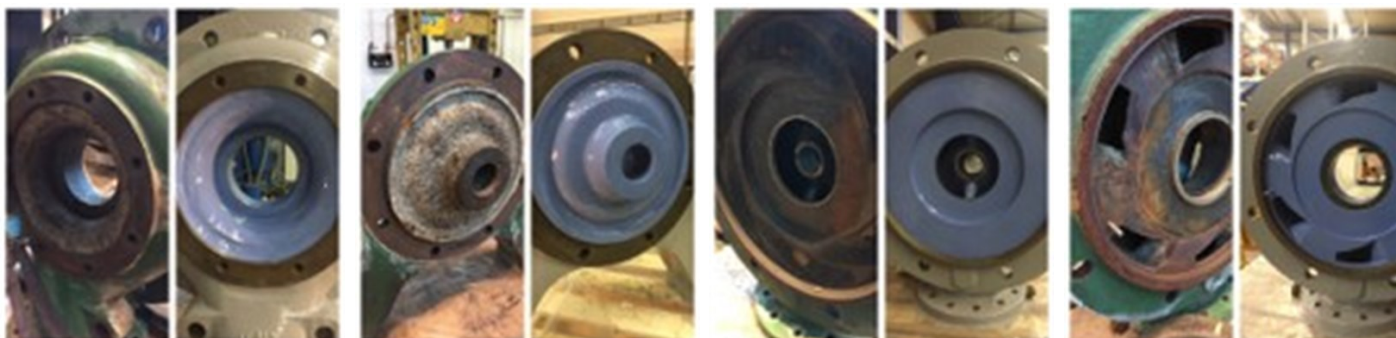
* Belzona 1341 (Supermetalgilde) ,

Customer Location: France

Application Date: October 2017

Problem

The substrate was badly damaged by corrosion and erosion and needed to be rebuilt and protected



Photograph Descriptions

- * 1- Pump 1 Before/After ,
- * 2- Pump 2 Before/After ,
- * 3- Pump 3 Before/After ,
- * 4- Pump 4 Before/After ,

Application Situation

Pump internal surface

Application Method

The application was carried out in accordance with Belzona System Leaflet CEP-1.

The substrate was first prepared by grit blasting. Then, Belzona 1311 was used to rebuild the damaged areas. Belzona 1341 was finally used on the whole internal surface to provide a protection against corrosion and erosion.

Belzona Facts

The lifetime and the efficiency of this equipment have been extended thanks to this Belzona system

For more examples of Belzona Know - How In Action, please visit <https://khia.belzona.com>

ISO 9001:2015

FS 695214

ISO 14001:2015

EMS 695213

Belzona products are
manufactured under an ISO
9000 Registered Quality
Management System.

www.belzona.com


BELZONA
Repair • Protect • Improve