

# BELZONA REPAIR TO TURBINE STATIONARY BLADE HOLDER

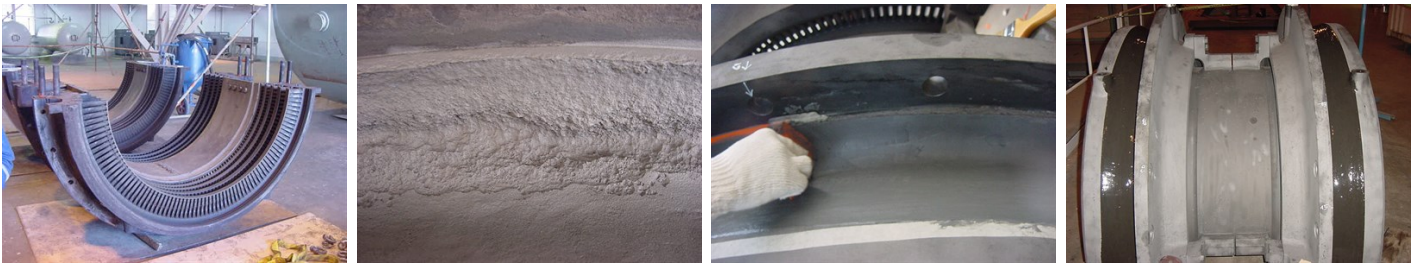
ID: 803

Industry: Power  
Application: CEP-Centrifugal Pumps  
Substrate: Cast Iron ASTM A27  
Products: \* Belzona® 1111 (Super Metal) ,  
\* Belzona® 1591 (Ceramic XHT) ,

Customer Location: Geothermal Power Station in Indonesia  
Application Date: August, 2006

## Problem

Erosion-corrosion on seating area of the upper and lower halves of the stationary blade holder. This had been caused by many years exposure to saturated steam.



## Photograph Descriptions

- \* View of the Stationary Blade Holders ,
- \* Typical damage found on the seating area after blasting ,
- \* Template in place to form the Belzona® 1111 ,
- \* Job completed with Belzona® 1591 ,

## Application Situation

Stationary Blade Holder

## Application Method

Application was carried out in accordance with Belzona Know How System Leaflet CEP-3 and CEP-5.

## Belzona Facts

Belzona was used because there was no other suitable solution to protect Blade Holder from erosion-corrosion. Belzona® 1511 would now be recommended for rebuilding in place of Belzona® 1111.

For more examples of Belzona Know - How In Action, please visit <https://khia.belzona.com>

ISO 9001:2015  
FS 695214  
ISO 14001:2015  
EMS 695213

Belzona products are  
manufactured under an ISO  
9000 Registered Quality  
Management System.

[www.belzona.com](http://www.belzona.com)

  
**BELZONA**  
Repair • Protect • Improve