

Belzona Magma Foundations Repair at Cement Factory

ID: 8070

Industry: Mining & Quarrying

Application: WPA-Wall Problem Areas

Substrate: Concrete

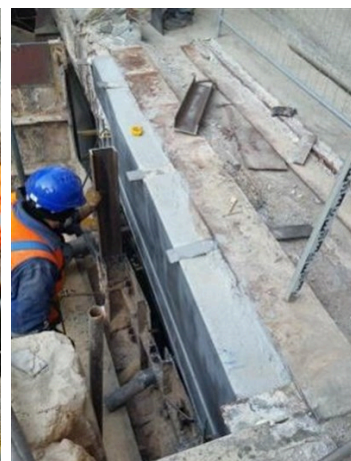
Products: * Belzona 4111 (Magma Series) ,

Customer Location: Southern Poland

Application Date: 2019

Problem

During long-term operation under varying climatic conditions and high temperatures, the foundation (supports, beams) was degraded under the head of the clinker furnace.



Photograph Descriptions

- * Degraded Concrete ,
- * Metal Mould to pour Belzona 4111 ,
- * Applying Belzona 4111 ,
- * Finished Job. ,

Application Situation

Repair of the foundations of the clinker furnace head at a large cement factory in Poland.

Application Method

The application was completed in accordance with an adapted version of Belzona System Leaflet WPA-4. A metal mould was created around the affected area to pour the Belzona 4111 into to ensure a perfect finish.

Belzona Facts

For more examples of Belzona Know - How In Action, please visit <https://khia.belzona.com>

ISO 9001:2015

FS 695214

ISO 14001:2015

EMS 695213

Belzona products are
manufactured under an ISO
9000 Registered Quality
Management System.

www.belzona.com


BELZONA®
Repair • Protect • Improve

Offered Belzona due to its outstanding long-term abrasion resistance and fast curing time.

For more examples of Belzona Know - How In Action, please visit <https://khia.belzona.com>

ISO 9001:2015	Belzona products are
FS 695214	manufactured under an ISO
ISO 14001:2015	9000 Registered Quality
EMS 695213	Management System.

www.belzona.com

