

# POTATO AND STARCH PUMPS REPAIRED WITH BELZONA

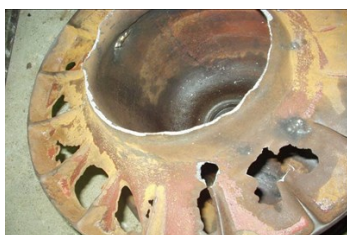
ID: 813

**Industry:** General Industry  
**Application:** CEP-Centrifugal Pumps  
**Substrate:** Cast Iron.  
**Products:** \* Belzona® 1311 (Ceramic R-Metal) ,  
\* Belzona® 1341N (Supermetalgilde) ,

**Customer Location:** Potato chip factory, Egypt  
**Application Date:** August 2006

## Problem

*Corrosion of the casings and impellers caused over long service life and through erosion. The impellers were badly eroded with thin edges and many holes.*



## Photograph Descriptions

- \* General view of one pump ,
- \* The badly damaged impeller ,
- \* Rebuilding the impeller ,
- \* Two pumps rebuilt and coated ,

## Application Situation

Two end suction pumps, one waste pump and the other a preheater pump. Both deal with water, potatoes and starch.

## Application Method

Application was carried out in accordance with Belzona Know-How System Leaflets CEP-3 & CEP-5.

## Belzona Facts

These pumps were repaired after two other pumps were successfully repaired with Belzona a year earlier. An NSF approved coating was required.

For more examples of Belzona Know - How In Action, please visit <https://khia.belzona.com>

ISO 9001:2015  
FS 695214  
ISO 14001:2015  
EMS 695213

Belzona products are  
manufactured under an ISO  
9000 Registered Quality  
Management System.

[www.belzona.com](http://www.belzona.com)

  
**BELZONA®**  
Repair • Protect • Improve