

# BELZONA REDUCES DREDGING PUMP REFURBISHMENT COSTS

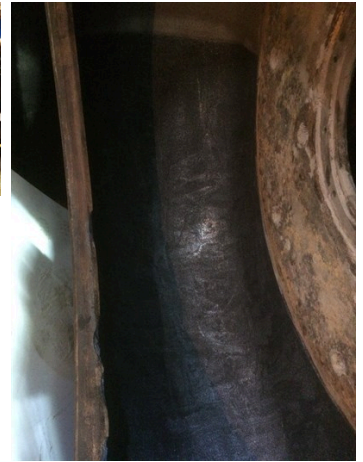
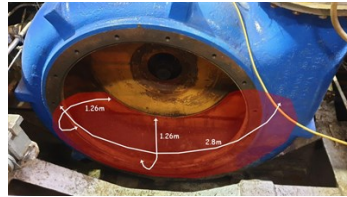
ID: 8134

Industry: Marine  
Application: CEP-Centrifugal Pumps  
Substrate: Steel  
Products: \* Belzona 1311 (Ceramic R-Metal) ,  
\* Belzona 1814 ,

Customer Location: Dredging Operator, Teesside, UK  
Application Date: October 2019

## Problem

The dredger pump had suffered significant localised damage with several areas requiring repair. The damaged areas extended into nozzles, but the worst attack had been in the belly of the pump.



## Photograph Descriptions

- \* 1. Hopper Dredger Vessel ,
- \* 2. Initial damage to pump ,
- \* 3. Worst effected area of pump ,
- \* 4. Finished application of Belzona 1814 ,

## Application Situation

Dredging pump onboard.

## Application Method

The application was carried out in accordance with Belzona system leaflets CEP-3 and CEP-5. After treating surfaces with SaltAway to remove soluble salts, the areas were grit blasted and degreased. Belzona 1311 was used to fill localised pitting and to rebuild edges. Finally, the belly of the pump was protected with 3mm of Belzona 1814, which was feathered towards the edges.

## Belzona Facts

For more examples of Belzona Know - How In Action, please visit <https://khia.belzona.com>

ISO 9001:2015  
FS 695214  
ISO 14001:2015  
EMS 695213

Belzona products are  
manufactured under an ISO  
9000 Registered Quality  
Management System.

[www.belzona.com](http://www.belzona.com)

  
**BELZONA**  
Repair • Protect • Improve

Belzona 1814 was chosen as it offered excellent abrasion resistance at a more affordable cost. This new bulk filled abrasion resistant material offered significant savings over the more traditional materials, and costs were nearly halved.

---

For more examples of Belzona Know - How In Action, please visit <https://khia.belzona.com>

ISO 9001:2015  
FS 695214  
ISO 14001:2015  
EMS 695213

Belzona products are  
manufactured under an ISO  
9000 Registered Quality  
Management System.

[www.belzona.com](http://www.belzona.com)

