

Belzona 2311 repairs Waste Incineration Plant Conveyor Belt

ID: 8347

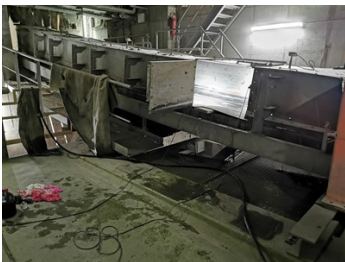
Industry: *Water / Wastewater*
Application: *SHM-Solids Handling Machinery*

Customer Location: *Switzerland*
Application Date: *June, 2019*

Substrate: *Rubber*
Products: ** Belzona 2311 and Belzona 2911 ,*

Problem

There were a number of tears in the conveyor belts due to the medium that was being transported along the conveyors. If the belts had torn completely the waste would have spread all over the internal of the operation and also the whole plant would have to be shut down to repair.



Photograph Descriptions

- * Picture 1 - Conveyor System ,
- * Picture 2 - Conveyor Belt Tear ,
- * Picture 3 - Belzona 2311 ,
- * Picture 4 - Application Complete ,

Application Situation

A conveyor belt had torn during operation within a waste incineration plant. Conveyor belts transport biomass from the waste heap to shredders or transfer stations.

Application Method

The application the the Belzona 2311 is very fast and effective due to its fast curing nature. The product was applied in accordance with Belzona System Leaflet SHM-1.

For more examples of Belzona Know - How In Action, please visit <https://khia.belzona.com>

ISO 9001:2015
FS 695214
ISO 14001:2015
EMS 695213

Belzona products are
manufactured under an ISO
9000 Registered Quality
Management System.

www.belzona.com


BELZONA
Repair • Protect • Improve

Belzona Facts

The local Swiss distributor were contacted due to the nature of the quick repair and the Belzona 2311 being able to fix the belt and back in service within 1 hour of full mechanical loading.

For more examples of Belzona Know - How In Action, please visit <https://khia.belzona.com>

ISO 9001:2015
FS 695214
ISO 14001:2015
EMS 695213

Belzona products are
manufactured under an ISO
9000 Registered Quality
Management System.

www.belzona.com

