

Belzona Seals an Emergency Basin

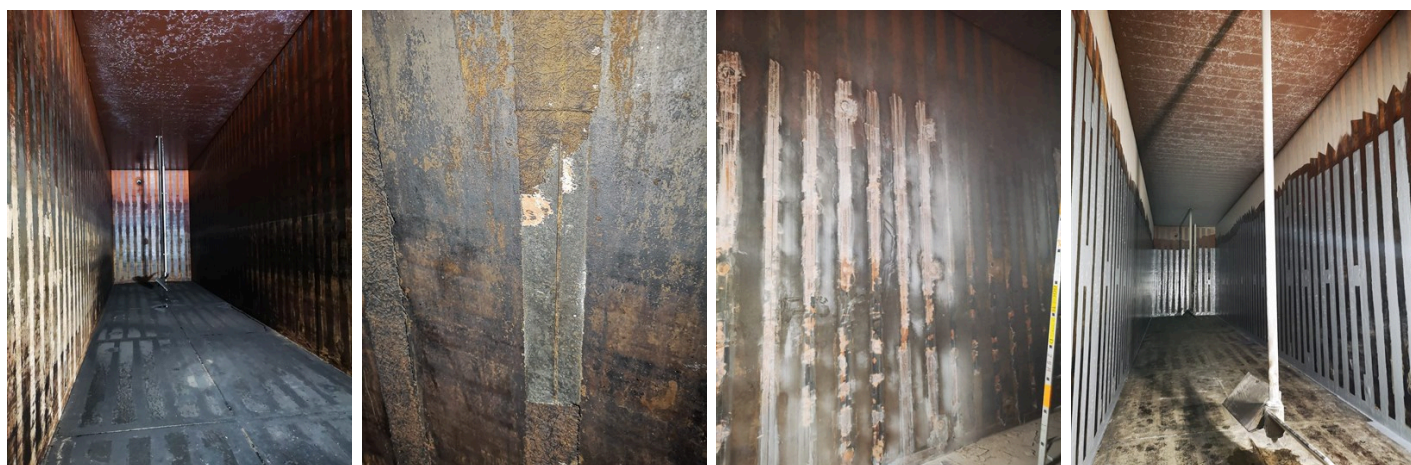
ID: 8549

Industry: *General Industry*
Application: *TCC-Tanks and Chemical Containment Areas*
Substrate: *Polyvinyl Chloride (PVC)*
Products: ** Belzona 5811 (Immersion Grade) ,
* Belzona 9341 ,*

Customer Location: *Luzern*
Application Date: *02/07/2019*

Problem

Leaks were found at the butting of joints. The old joints had been mated and sealed using glue and glass fiber mats to prevent leaks which later failed - 195 butting joints had to be repaired.



Photograph Descriptions

- * 1). Overview of the emergency basin. ,
- * 2). Failing butt joints through which water penetrates to the outside. ,
- * 3). Removal of glassfiber matting via the use of grinding. ,
- * 4). The joints were re-sealed with 2 layers of Belzona 9341 impregnated in Belzona 5811. ,

Application Situation

Emergency storage basin.

Application Method

The old glass fiber mats were removed by machine and the repair areas were degreased. The Belzona 5811 impregnated in Belzona 9341 (Reinforcement Sheet) was applied in 2 layers aided by a paint roller. The application was carried out in accordance with Belzona System leaflet TCC-15.

For more examples of Belzona Know - How In Action, please visit <https://khia.belzona.com>

ISO 9001:2015
FS 695214
ISO 14001:2015
EMS 695213

Belzona products are
manufactured under an ISO
9000 Registered Quality
Management System.

www.belzona.com

**BELZONA**
Repair • Protect • Improve

Belzona Facts

Several tests were conducted with the the customer in order to ensure that the most appropriate product was selected to meet the equipments operating environment. As the emergency basin is filled with water, Belzona 5811 was selected providing a more cost efficient barrier solution for low risk submerged service.

For more examples of Belzona Know - How In Action, please visit <https://khia.belzona.com>

ISO 9001:2015
FS 695214
ISO 14001:2015
EMS 695213

Belzona products are
manufactured under an ISO
9000 Registered Quality
Management System.

www.belzona.com

