

# Wastewater Pump Impeller

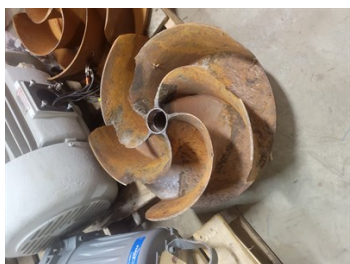
ID: 8912

Industry: Water / Wastewater  
Application: CEP-Centrifugal Pumps  
Substrate: Carbon steel  
Products: Belzona 1111 Supermetal  
Belzona 1321 S-Metal

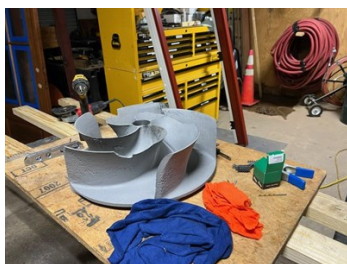
Customer Location: Columbia, SC  
Application Date: 12/17/22

## Problem

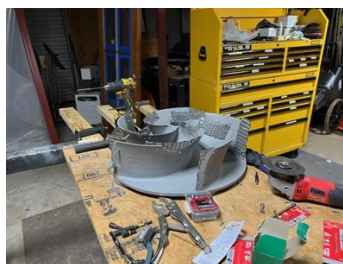
*Pump Impeller was pitted and damaged, and missing chunks out of a few of the veins, and they were wore down on the ends. We needed to build up the veins and pitted areas, and then coat to protect the impeller from further damage in the future.*



Damaged Impeller



Impeller after being blasted



Impeller built up with expanded metal



Impeller rebuilt with expanded metal, Belzona 1111 Supermetal, and coated with Belzona 1321 S-Metal.

## Application Situation

Wastewater impeller was damaged and needed to be rebuilt and coated.

## Application Method

We sandblasted the impeller to a 3 mil profile. Built up the damaged areas with expanded metal and Supermetal. Then we applied two coats Belzona 1321 S-Metal.

## Belzona Facts

The application was less expensive than buying a brand-new impeller, plus, we were able to salvage an impeller that was going to be thrown out. They used Belzona because it was the best choice of repairing and protecting the impeller.

For more examples of Belzona Know - How In Action, please visit <https://khia.belzona.com>

ISO 9001:2015  
FS 695214  
ISO 14001:2015  
EMS 695213

Belzona products are  
manufactured under an ISO  
9000 Registered Quality  
Management System.

[www.belzona.com](http://www.belzona.com)

Copyright © Belzona International Limited 2024

  
**BELZONA®**  
Repair • Protect • Improve