

Aluminum Catwalk - Food Plant

ID: 9026

Industry: Food & Drink

Application: FPA-Floor Problem Areas

Substrate: Aluminum

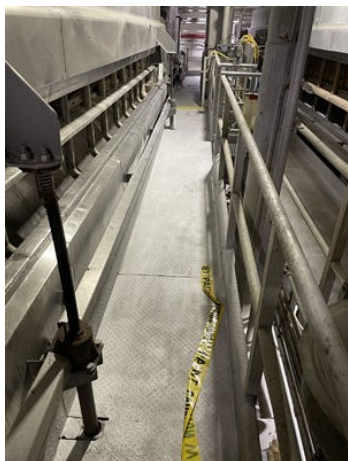
Products: Belzona 1121 (Super XL-Metal), Belzona 1392 (Ceramic HT2), Belzona 5811 (Immersion Grade)

Customer Location: Richland, Washington, USA

Application Date: March 2022

Problem

Customer needed to repair and prevent future degradation of a large elevated catwalk surrounding a potato fryer.



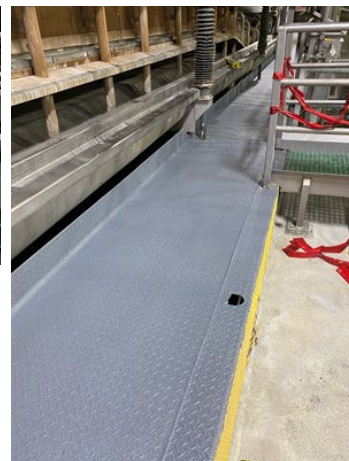
Grit blasted aluminum prior to cold bonding and coating.



Aluminum plates used to reinforce thin wall or thru-wall area on the walking surface.



First coat of Belzona 5811, this allowed a long overcoat window for the large-scale application.



Final Coat with Belzona 1392.

Application Situation

Customer was going to be forced to replace the entire catwalk structure or find a solution to repair and prevent future degradation. The Belzona cold bonding and coating saved an immense amount of time and money for the client.

Application Method

Aluminum was Grit blasted to a minimum 3 mil profile for cold bonding and coating system.

Belzona Facts

The Belzona cold bond and coating saved a massive amount of time and money for the client, compared to down time, labor, and materials for replacing the entire catwalk.

For more examples of Belzona Know - How In Action, please visit <https://khia.belzona.com>

ISO 9001:2015

FS 695214

ISO 14001:2015

EMS 695213

Belzona products are
manufactured under an ISO
9000 Registered Quality
Management System.

www.belzona.com

Copyright © Belzona International Limited 2025


BELZONA®
Repair • Protect • Improve