

# Belzona Repairs Overhead Concrete above pedestrian walkway at local hospital

ID: 9088

Industry: *Buildings & Structures*

Application: *FPA-Floor Problem Areas*

Substrate: *Concrete*

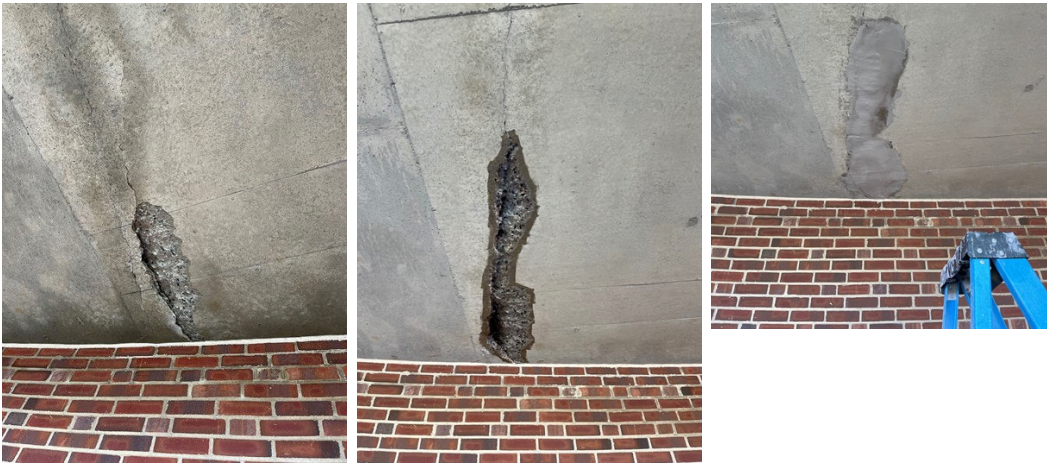
Products: *Belzona 4141FR, Belzona 4911 (Magma TX Conditioner)*

Customer Location: *Greensboro, North Carolina*

Application Date: *May 2023*

## Problem

*Pieces of Concrete were falling from bottom of sidewalk ramp 10 ft above pedestrian walkway*



## Application Situation

We got the job because of the material and time savings. Belzona 4141 applied upside down and fast cure time. This limited the down time in the area from the walkway having to be closed for a long time. They needed the job done quick, quiet and easy.

## Application Method

We set up safe zone and barricaded to keep pedestrians from trafficking into the work area. Plastic was put down under repair areas. We chiseled out repair areas and removed rust from any exposed rebar. We applied Belzona 4911 Conditioner first then the Belzona 4141 Concrete repair material. It was quite difficult hanging the Belzona 4141 upside down but we persevered. Would probably use some plyboards next time.

## Belzona Facts

Really not many other options to repair these due to location and the need to cure fast. We have many more such areas to repair.

For more examples of Belzona Know - How In Action, please visit <https://khia.belzona.com>

ISO 9001:2015

FS 695214

ISO 14001:2015

EMS 695213

Belzona products are  
manufactured under an ISO  
9000 Registered Quality  
Management System.

[www.belzona.com](http://www.belzona.com)

  
**BELZONA**<sup>®</sup>  
Repair • Protect • Improve