

Axial flow pump rebuild & coating

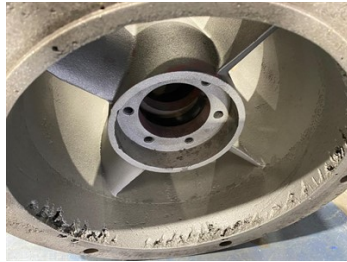
ID: 9186

Industry: *General Industry*
Application: *CEP-Centrifugal Pumps*
Substrate: *Carbon steel*
Products: *Belzona 1111 (Super Metal), Belzona 1321 (Ceramic S-Metal)*

Customer Location: *Scotland*
Application Date: *July 2023*

Problem

An axial flow pump had become damaged by erosion & corrosion in service leading to a loss in efficiency



Damaged pump body

Surface preparation

Rebuilding with Belzona 1111

Finished Belzona coating

Application Situation

A pump body & impeller required rebuilding & protection from future damage

Application Method

The components were grit blasting to SA2.5 & 75 microns. Lost metal was rebuild with Belzona 1111 (Super Metal). Two coating of Belzona 1321 (Ceramic S Metal) were then applied.

Belzona Facts

This repair & coating allowed the pump to go back into service, saving it from scrap & making it more resistant to erosion & corrosion than the original components.

For more examples of Belzona Know - How In Action, please visit <https://khia.belzona.com>

ISO 9001:2015
FS 695214
ISO 14001:2015
EMS 695213

Belzona products are
manufactured under an ISO
9000 Registered Quality
Management System.

www.belzona.com


BELZONA
Repair • Protect • Improve