

# Rebuilding concrete columns in a colling tower.

ID: 9241

Industry: Steel & Metal Processing

Application: WPA-Wall Problem Areas

Substrate: Concrete

Products: Belzona 4141 (Magma-Build), Belzona 5811 (Immersion Grade)

Customer Location: Gary, Indiana

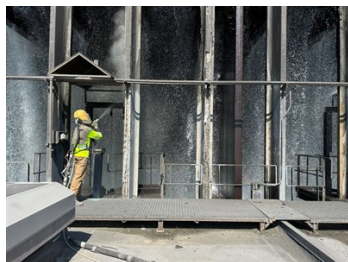
Application Date: September 2023

## Problem

The customer faced deteriorations of concrete columns with exposed rebars in their cooling tower.



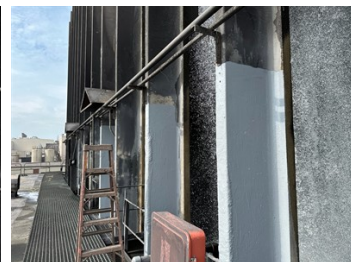
Deterioration of the columns



Surface preparation on concrete



Application of Belzona 4141 for repair



Application of Belzona 5811 for protection

## Application Situation

The primary goal was to ensure the secure sealing of rebars while achieving a revitalized appearance. Implementing Belzona not only reduced downtime but also provided superior protection compared to other alternatives, contributing to cost and time savings.

## Application Method

Specific techniques, such as floats and a wood mold, were employed for the best finish. After curing, the product was sanded for an even better result.

## Belzona Facts

The benefits of Belzona 4141 include its lightweight composition suitable for application on vertical and overheated surfaces. It offers rapid curing and outstanding adhesion properties to concrete.

For more examples of Belzona Know - How In Action, please visit <https://khia.belzona.com>

ISO 9001:2015

FS 695214

ISO 14001:2015

EMS 695213

Belzona products are  
manufactured under an ISO  
9000 Registered Quality  
Management System.

[www.belzona.com](http://www.belzona.com)

  
**BELZONA**<sup>®</sup>  
Repair • Protect • Improve