

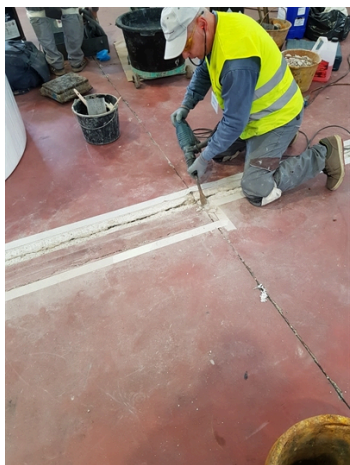
Belzona 4111 Fills the Concrete Cracks in Warehouse Floor to Maintain Safety in Workplace

ID: 9291

Industry:	Buildings & Structures	Customer Location:	Italy
Application:	FPA-Floor Problem Areas	Application Date:	
Substrate:	Concrete		
Products:	Belzona 4111 (Magma-Quartz),Belzona 4151 (Magma-Quartz Resin),Belzona 4911 (Magma TX Conditioner)		

Problem

Due to repeated heavy vehicle and pedestrian traffic, damage to concrete joints and cracks in the floor are common in any industrial warehouse. These defects pose a safety risk to warehouse workers and impede vehicular traffic, increasing the need for repairs that provide a sustainable, long-term solution.



Remove detached concrete pieces and prepare grooves for repair along the crack lines



Cleaning after the preparation to remove dust and small debris



Belzona 4911 Conditioner applied to the exposed concrete substrate in the repaired area



Complete repair on a warehouse floor

Application Situation

Conventional mortars and cements did not provide long-term solutions, resulting in recurring expenses. Therefore, the client wanted a solution that would provide long-term protection and cost-effectiveness.

Application Method

The application was carried out in accordance with Belzona Know-How System Leaflet FPA-1. To address damaged joints and cracks in the floor, a V-shaped groove needs to be cut out which is filled with Belzona 4111 (magma-quartz) mixture. Grooves are dug for each section, typically 6 mm to 10 mm deep, depending on the width and depth of the cracks. Exposed concrete surfaces were thoroughly prepared with a scarifier. After removing dust and impurities, the grooves were conditioned with Belzona 4911 (Magma TX conditioner). Finally, the mixed Belzona 4111 (Magma Quartz) was applied directly to the conditioned surface and finished by trowelling to smooth the surface.

Belzona Facts

For more examples of Belzona Know - How In Action, please visit <https://khia.belzona.com>

ISO 9001:2015	Belzona products are
FS 695214	manufactured under an ISO
ISO 14001:2015	9000 Registered Quality
EMS 695213	Management System.

www.belzona.com



Belzona 4111 (Magma-Quartz) was chosen to address this problem in floor areas due to its excellent adhesion to concrete, outstanding mechanical properties, quick return to service and long-term durability, effectively preventing the problem from recurring.

For more examples of Belzona Know - How In Action, please visit <https://khia.belzona.com>

ISO 9001:2015
FS 695214
ISO 14001:2015
EMS 695213

Belzona products are
manufactured under an ISO
9000 Registered Quality
Management System.

www.belzona.com

