

Belzona repairs & protects end suction pump

ID: 9326

Industry: Oil & Gas

Application: CEP-Centrifugal Pumps

Substrate: Carbon steel

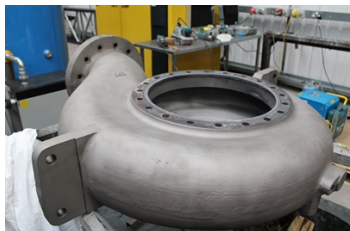
Products: Belzona 1311 (Ceramic R-Metal), Belzona 1321 (Ceramic S-Metal)

Customer Location: United Kingdom

Application Date: March 2024

Problem

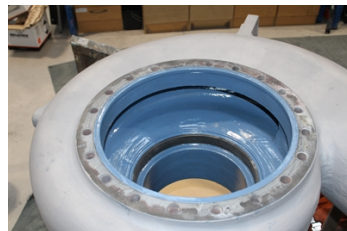
A pump casing was suffering from the effects of erosion & corrosion in service. A protective coating was required to extend the life of the pump in future service.



Pump inspection



Surface preparation in grit blasting booth



Belzona 1321 being applied



Belzona 1321 applied internally

Application Situation

By carrying out these repairs the casing could be returned to service for many more years

Application Method

The casing was grit blasted to SA2.5 & 75 microns. Any metal repairs were carried out using Belzona 1311 Ceramic R metal. Two coats of Belzona 1321 Ceramic S Metal were then applied.

Belzona Facts

The Belzona 1321 Ceramic S Metal system is highly corrosion & erosion resistant. It also has a relatively thin film thickness which means the pumps performance is not adversely affected by flow constrictions as can be the case with thick coatings.

For more examples of Belzona Know - How In Action, please visit <https://khia.belzona.com>

ISO 9001:2015

FS 695214

ISO 14001:2015

EMS 695213

Belzona products are
manufactured under an ISO
9000 Registered Quality
Management System.

www.belzona.com

Copyright © Belzona International Limited 2025


BELZONA
Repair • Protect • Improve