

Belzona 5811 Exterior/Internal Columns and Head Belzona 5811/5111 Exterior 1341 Wet Interior Pitting filled with Belzona 1121

ID: 9363

Industry: Oil & Gas
Application: CEP-Centrifugal Pumps
Substrate: Carbon steel
Products: Belzona 1121 (Super XL-Metal), Belzona 1341 (Supermetalgilde), Belzona 5111 (Ceramic Cladding), Belzona 5811 (Immersion Grade)

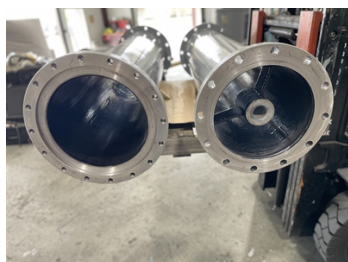
Customer Location: Norco, Louisiana
Application Date: March 2024

Problem

Extreme pitting and loss of integrity



Columns Before



Columns After Belzona 5811
External/Internal



Head Before



Head After Belzona 5811/5111
External/ 1341 Internal

Application Situation

Time savings was important as could return to process quickly.
Repair costs were far less than ordering a new pump.

Application Method

Abrasive blast internals and externals to SSPC PC 10 (3 mil min. angular profile) as per product manufacturer's recommendations.
-Rebuild pitted areas using Belzona 1121.
-Apply Belzona 5811/5111 to exterior and Belzona 1341 interior wet areas of listed parts as per product manufacturer's recommendation as listed.

Belzona Facts

Belzona was quickest repair turnaround time.

For more examples of Belzona Know - How In Action, please visit <https://khia.belzona.com>

ISO 9001:2015
FS 695214
ISO 14001:2015
EMS 695213

Belzona products are
manufactured under an ISO
9000 Registered Quality
Management System.

www.belzona.com


BELZONA
Repair • Protect • Improve