

Treatment of the water chambers of the exchanger.

ID: 9420

Industry: *Steel & Metal Processing*

Customer Location: *Kosice Slovakia*

Application: *HEX-Heat Exchangers*

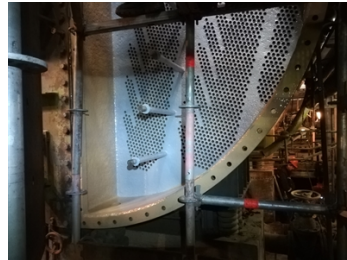
Application Date: *February 2019*

Substrate: *Carbon steel*

Products: *Belzona 1311 (Ceramic R-Metal), Belzona 1341 (Supermetalgilde), Belzona 5811 (Immersion Grade)*

Problem

Bimetallic corrosion, erosion/corrosion resulting in leakage of rolled pipes.



Damaged surface of the tube sheet.

Application of the first layer of Belzona 1341.

Application of the first layer of Belzona 1341.

Application of the second layer of Belzona 1341.

Application Situation

Applying a protective coating seals the pipes and evens out the surface, resulting in fluid flow adjustment and longer service life.

Application Method

The surface of the tube was blasted, major damage around the pipes was rebuilt with Belzona 1311 and then covered with Belzona 1341 protective coating. The water chambers, bulkheads and gates were painted with Belzona 5811 after blasting.

Belzona Facts

An alternative to this repair is to replace the pipes, which is more time-consuming and costly.

For more examples of Belzona Know - How In Action, please visit <https://khia.belzona.com>

ISO 9001:2015

Belzona products are

FS 695214

manufactured under an ISO

ISO 14001:2015

9000 Registered Quality

EMS 695213

Management System.

www.belzona.com

**BELZONA**
Repair • Protect • Improve