

Protection of the inside of the filter housing.

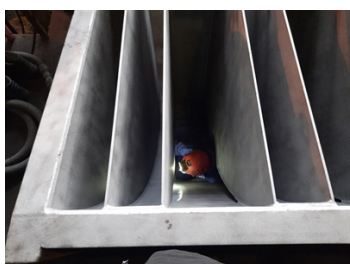
ID: 9421

Industry: *Steel & Metal Processing*
Application: *TCC-Tanks and Chemical Containment Areas*
Substrate: *Carbon steel*
Products: *Belzona 1341 (Supermetalglide)*

Customer Location: *Kosice*
Application Date: *April 2023*

Problem

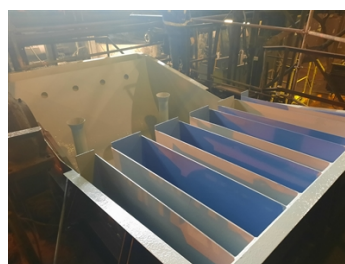
Abrasion and corrosion occur during filter operation. The rotor on which the inflatable canvas discs are located, scoops up the sludge on its surface at the bottom of the filter and then rubs it into the overflow channels at the top.



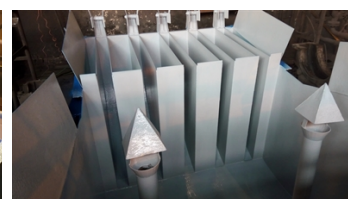
Before applying the Belzona product, the surface was blasted.



Application of the first layer of Belzona 1341.



Application of the second layer of Belzona 1341.



Application of the second layer of Belzona 1341.

Application Situation

Belzona 1341 protective coating extends the life of the equipment. Without a protective coating, the filter walls become thinner, which then have to be blasted off and then welded into new ones.

Application Method

The surface was cleaned, blasted and coated with Belzona 1341.

Belzona Facts

Belzona 1341 protective coating extends the life of the equipment. Without a protective coating, the filter walls become thinner, which then have to be blasted off and then welded into new ones. In the case of a larger extent of damage, it is necessary to replace the entire filter with a new one, which is more time-consuming and financially demanding.

For more examples of Belzona Know - How In Action, please visit <https://khia.belzona.com>

ISO 9001:2015
FS 695214
ISO 14001:2015
EMS 695213

Belzona products are
manufactured under an ISO
9000 Registered Quality
Management System.

www.belzona.com

**BELZONA**
Repair • Protect • Improve