

# Chemical Containment Area

ID: 9443

Industry: *Chemical & Petrochemical* Customer Location: *GA*  
 Application: *TCC-Tanks and Chemical Containment Areas* Application Date: *May 2024*  
 Substrate: *Concrete*  
 Products: *Belzona 4311 (Magma CR1), Belzona 4911 (Magma TX Conditioner)*

## Problem

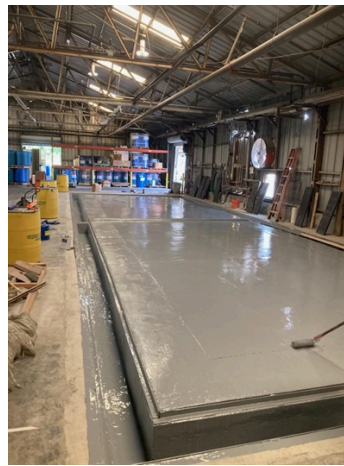
*The customer had a new containment area they needed to protect.*



New uncoated containment area



The first coat of Belzona 4311



The second coat of Belzona 4311



Follow up picture

## Application Situation

The customer has several other containment areas that were not coated and are suffering from damage due to the harsh chemicals at the plant. After several visits and a lunch and learn they decided. Belzona was a good option to protect the new area.

## Application Method

The new concrete was over 30 days old. It was pressure washed and allowed to dry then a grinder was used to give a profile on the concrete, It was cleaned again to remove the dust. Belzona 4911 primer was applied, then Belzona 4311 second coat of Belzona 4311 Grey followed Red.

## Belzona Facts

The customer realized it was better to protect now than to wait, which would cause downtime with production, time is money

For more examples of Belzona Know - How In Action, please visit <https://khia.belzona.com>

ISO 9001:2015  
 FS 695214  
 ISO 14001:2015  
 EMS 695213

Belzona products are  
 manufactured under an ISO  
 9000 Registered Quality  
 Management System.

[www.belzona.com](http://www.belzona.com)

  
**BELZONA**<sup>®</sup>  
 Repair • Protect • Improve