

Repair of damaged impeller edges.

ID: 9599

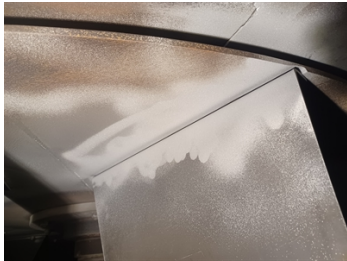
Industry: *Cement*
Application: *FBC-Fans, Blowers and Compressors*

Customer Location: *Slovakia*
Application Date: *January 2024*

Substrate: *Carbon steel*
Products: *Belzona 1812 (Ceramic Carbide FP)*

Problem

During the distribution of dusty construction materials, the edges and blades of the fan impeller are damaged.



Dusty material causes damage to the edges and blades of the fan.



Detail of damage.



Fixed fan damage using Belzona 1812 product.



Repair detail.

Application Situation

Dusty material causes damage to the edges and blades of the fan. It was essential to find some solution to protect the fan from abrasion.

Application Method

Blasting the surface to the required standard Sa 2.5. Surface degreasing.

Application of the product Belzona 1812 in a total thickness of approx. 6000 µm.

Belzona Facts

The damage reduced production productivity and caused production shutdowns. Application of the product Belzona 1812 in a total thickness of approx. 6000 µm prevented damage to the edges and shoveling of the fan.

For more examples of Belzona Know - How In Action, please visit <https://khia.belzona.com>

ISO 9001:2015
FS 695214
ISO 14001:2015
EMS 695213

Belzona products are
manufactured under an ISO
9000 Registered Quality
Management System.

www.belzona.com


BELZONA®
Repair • Protect • Improve