

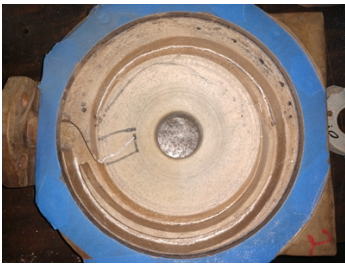
Belzona 4341 rescues the Fibroc pump

ID: 9614

Industry: *Fluid Flow* Customer Location: *Washington*
 Application: *CEP-Centrifugal Pumps* Application Date: *October 2017*
 Substrate: *Composite*
 Products: *Belzona 4341 (Magma CR4), Belzona 4911 (Magma TX Conditioner)*

Problem

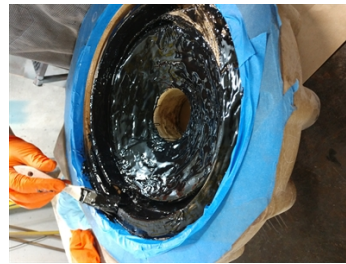
This outdated pump had several cracks, fractures, damaged areas, and worn areas.



Original condition. The black markings indicating where the cracks and fractures are.



Shaft showing heavy uneven wear.



Application of Belzona 4341.



Showing some of the pieces with the application complete.

Application Situation

This was an older Fibroc pump that was no longer in production, so replacing it was not an option. Ordering a newer or different version of the pump would have forced the customer to rework the system to accommodate a different pump. Repairing the pump was the only option, and Belzona 4341 was the only material suitable for the high temperatures, a mix of chemicals, and the abrasive materials that run through it.

Application Method

Carefully sandblasted the pump to clean and roughen the composite surface, and then washed with solvent. Belzona 4341 was carefully weighed out to ensure the material would perform as needed. Belzona 4341 was applied by brush.

Belzona Facts

The cost of the Belzona materials for this pump was less than 10% of replacing it and reworking an entire production area to accommodate a new pump. With the heat, abrasion, and chemical resistance of the Belzona 4341, this was the perfect solution. This pump was still in operation 18 months later.

For more examples of Belzona Know - How In Action, please visit <https://khia.belzona.com>

ISO 9001:2015
 FS 695214
 ISO 14001:2015
 EMS 695213

Belzona products are
 manufactured under an ISO
 9000 Registered Quality
 Management System.

www.belzona.com


BELZONA[®]
 Repair • Protect • Improve