

Belzona Prevents Wear on a Seafood Processor

ID: 9688

Industry: Marine
Application: SOS-Ships and Offshore Structures

Customer Location: Seattle Washington
Application Date: May 2017

Substrate: Stainless-steel
Products: Belzona 1311 (Ceramic R-Metal)

Problem

This seafood waste chopper was wearing down from many years of use resulting on the shaft getting bowed and causing the large heavy chopper head to jam.



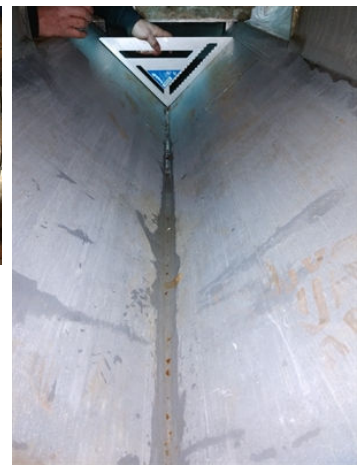
Original condition.



Ready to apply the Belzona 1311.



Application complete.



One year later showing the channel is still true and square.

Application Situation

This chopper trough was wearing down causing the heavy chopper head to jam. This was the largest fish processing vessel in the Pacific ocean at the time, and it was only planning on operating for 5 more years before being retired, so replacement was not an option. However a repair was needed that would last. Belzona 1311 was chosen for its wear resistance in wet environments, and inspection one year later shows that it was the correct choice.

Application Method

The surface was grit blasted and washed with solvent, and then the Belzona 1311 was carefully applied by hand in a thin smooth layer.

Belzona Facts

The cost of replacing this unit was likely several thousand dollars and due to location on the vessel, likely at least a week of labor to access it, remove it, and reinstall it. This application was carried out in half a day by 2 people, and successfully lasted well over a year until the vessel was retired.

For more examples of Belzona Know - How In Action, please visit <https://khia.belzona.com>

ISO 9001:2015
FS 695214
ISO 14001:2015
EMS 695213

Belzona products are
manufactured under an ISO
9000 Registered Quality
Management System.

www.belzona.com

BELZONA
Repair • Protect • Improve