

BELZONA RESTORES SCHOOL TOWER

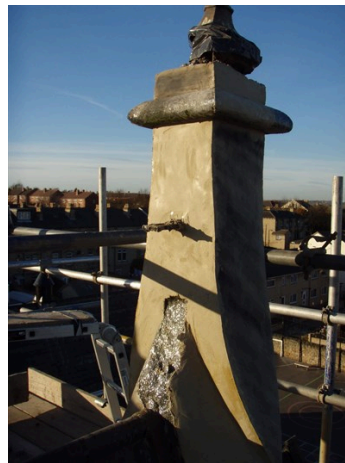
ID: 981

Industry: Buildings & Structures
Application: WPA-Wall Problem Areas
Substrate: Stone & Wrought Iron
Products: * Belzona® 1111 (Super Metal) ,
* Belzona® 4231 (E Magma Quartz) ,
* Belzona® 6111 (Liquid Anode) ,
* Belzona® 5111 (Ceramic Cladding) ,
* Belzona® 5122 (Clear Cladding Concentrate) ,

Customer Location: Primary School, UK
Application Date: November 2007

Problem

Cracking and spalling of 2 stone towers and corrosion of connecting wrought iron metalwork created a Health & Safety risk.



Photograph Descriptions

- * The problem ,
- * Stone removal ,
- * Completed rear tower ,
- * Completed work ,
- ,

Application Situation

Two stone towers connected with a wrought iron construction at the top of an old school building.

Application Method

Application was carried out in accordance with Belzona Know-How System Leaflets WPA-4 & 8. The stonework was rebuilt with Belzona® 4231. Belzona® 1111 used to rebuild corroded wrought iron before protecting with Belzona® 6111/5111 system. Belzona®

For more examples of Belzona Know - How In Action, please visit <https://khia.belzona.com>

ISO 9001:2015
FS 695214
ISO 14001:2015
EMS 695213

Belzona products are
manufactured under an ISO
9000 Registered Quality
Management System.

www.belzona.com


BELZONA®
Repair • Protect • Improve

5122 applied to stonework for long term protection.

Belzona Facts

Using Belzona we were able to preserve the original aesthetics of the building in keep with the period build of the school! Also the cost of the job was £6,500 including labour. This gave the Council a considerable saving compared to rebuilding the towers from scratch or alternative methods of repair that wouldn't uphold the aesthetics of the building.

For more examples of Belzona Know - How In Action, please visit <https://khia.belzona.com>

ISO 9001:2015
FS 695214
ISO 14001:2015
EMS 695213

Belzona products are
manufactured under an ISO
9000 Registered Quality
Management System.

www.belzona.com

