

Belzona opens the door

ID: 9919

Industry: Chemical & Petrochemical

Application: ENC-Engines and Casings

Substrate: Other

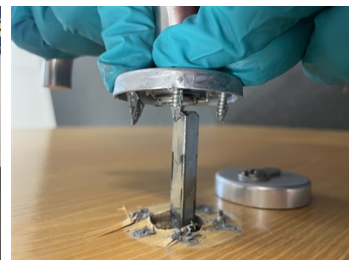
Products: Belzona 1111 (Super Metal), Belzona 9411 (Release Agent)

Customer Location: North Yorkshire

Application Date: July 2025

Problem

Door handle coming off.



The damaged door

Belzona 9411 was applied to the screws, and importantly, to the door handle so that it could be removed in future if needed

Belzona 1111 was worked into the holes in the door, as well as on the screws

The door was reassembled, and screws tightened. The wet-out of the screws here was not perfect, however, the Belzona 1111 in the hole and on the screw would wet out on assembly

Application Situation

The screws on the door handle had pulled and ripped the wood, due to finance team's enthusiasm to get to work. Having a screw loose, or more than one, is not good for such a critical operating area, so it was important for the site facilities team to respond quickly to ensure the internal customer was happy and the facilities team would be paid at the end of the month.

Application Method

The Door handle, and screws, were coated with 9411 and allowed to dry for 20mins. Belzona 1111 was mixed and worked into the wood of the door, and some was also put on the screw threads, before the unit was reassembled and allowed to cure. This used the ENC2 stripped thread method.

Belzona Facts

Alternatives were to buy in "through door screws", or rotate the door handle - although this had been done once already. This used a very small amount of Belzona 1111 from the Facilities Maintenance department's stock and will ensure reliable operation.

For more examples of Belzona Know - How In Action, please visit <https://khia.belzona.com>

ISO 9001:2015

FS 695214

ISO 14001:2015

EMS 695213

Belzona products are
manufactured under an ISO
9000 Registered Quality
Management System.

www.belzona.com

Copyright © Belzona International Limited 2025


BELZONA
Repair • Protect • Improve