

# Belzona repairs to a severely eroded copper casting pump

ID: 9953

Industry: Food & Drink  
Application: CEP-Centrifugal Pumps  
Substrate: Cast Iron  
Products: Belzona 1391T

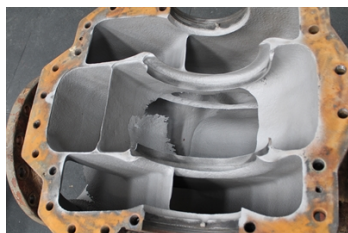
Customer Location: Newport  
Application Date: August 2025

## Problem

This pump had severe erosion damage with multiple through-wall defects. Their new pump wasn't due to arrive for six months, and the pump needed to remain operational until that date



Severely eroded pumps with multiple through wall defects



Pump is grit blasted to minimum surface profile



Through wall defects and missing metal is rebuilt



Two coats on Belzona 1391T are applied to protect against erosion/corrosion at high temperatures under immersion

## Application Situation

The pump was in such a state of disrepair, that replacing the asset seemed to be the most logical. However due to tight time constraints, the pump needed a repair that would ensure a quick return to service to reduce severe losses on downtime.

## Application Method

The pump was grit-blasted, back to minimum surface profile. The through wall defects and eroded edges of the pump were rebuilt using Belzona 9371. Then a two-coat system of Belzona 1391T was applied to protect against erosion/corrosion until new pump could be installed.

## Belzona Facts

Without Belzona repair, the client would have faced significant losses trying to find an alternative solution. Belzona UK repaired and shipped the vital asset within a number of days to be

For more examples of Belzona Know - How In Action, please visit <https://khia.belzona.com>

ISO 9001:2015  
FS 695214  
ISO 14001:2015  
EMS 695213

Belzona products are  
manufactured under an ISO  
9000 Registered Quality  
Management System.

[www.belzona.com](http://www.belzona.com)

  
**BELZONA**<sup>®</sup>  
Repair • Protect • Improve